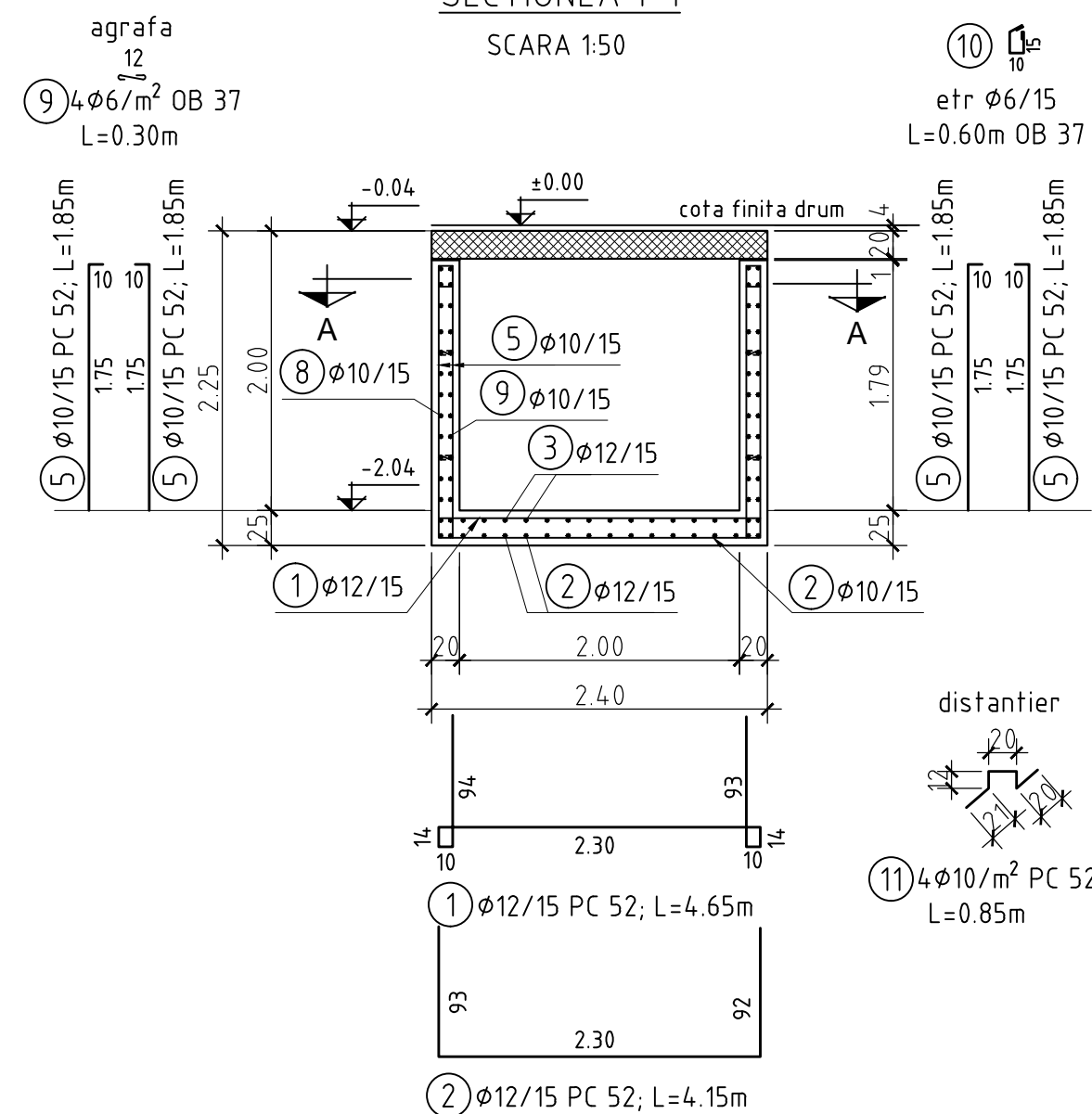
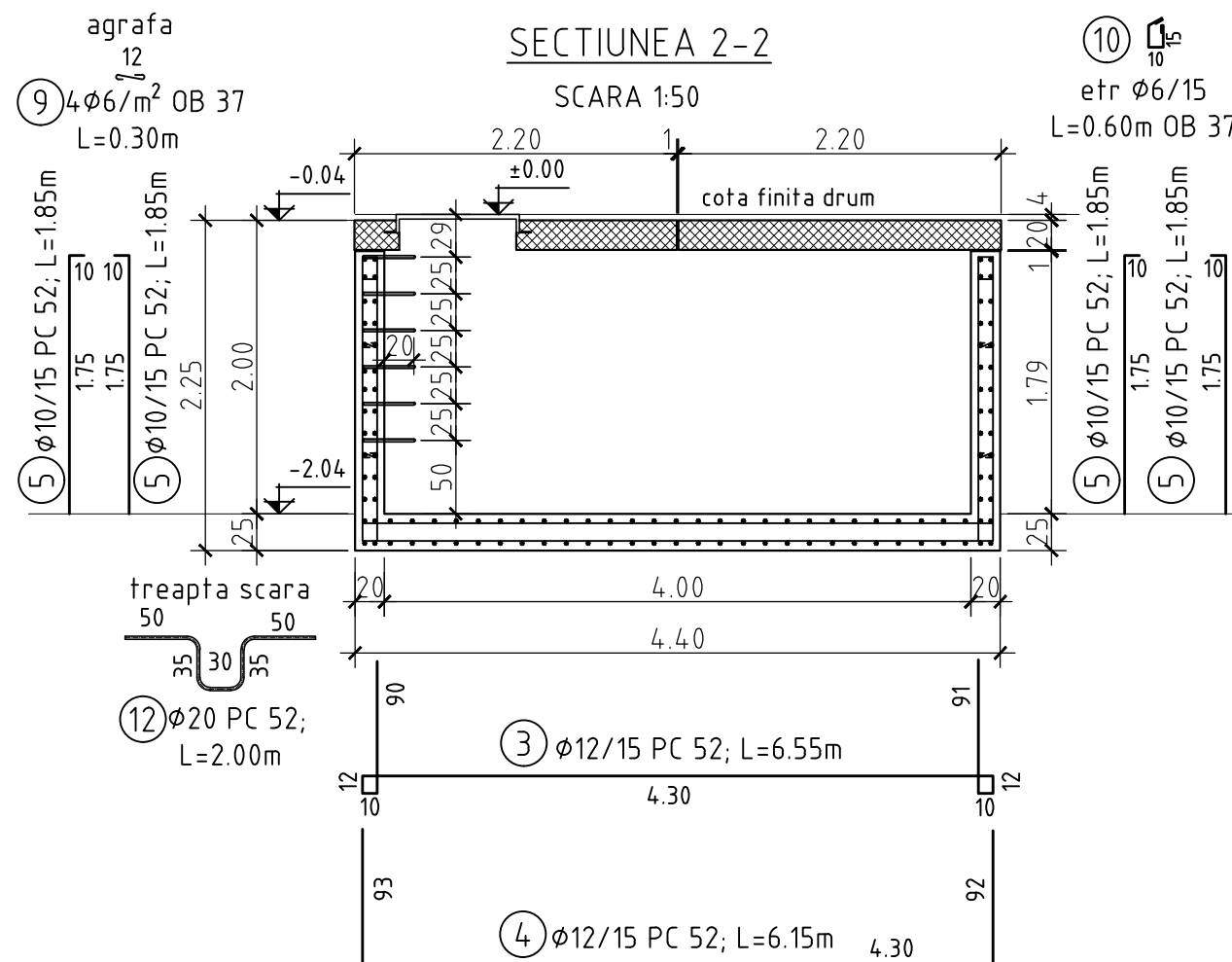


PLAN ARMARE CAMIN TIP 27

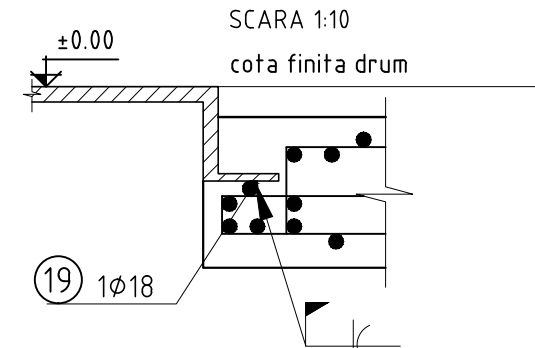
SECTIUNEA 1-1



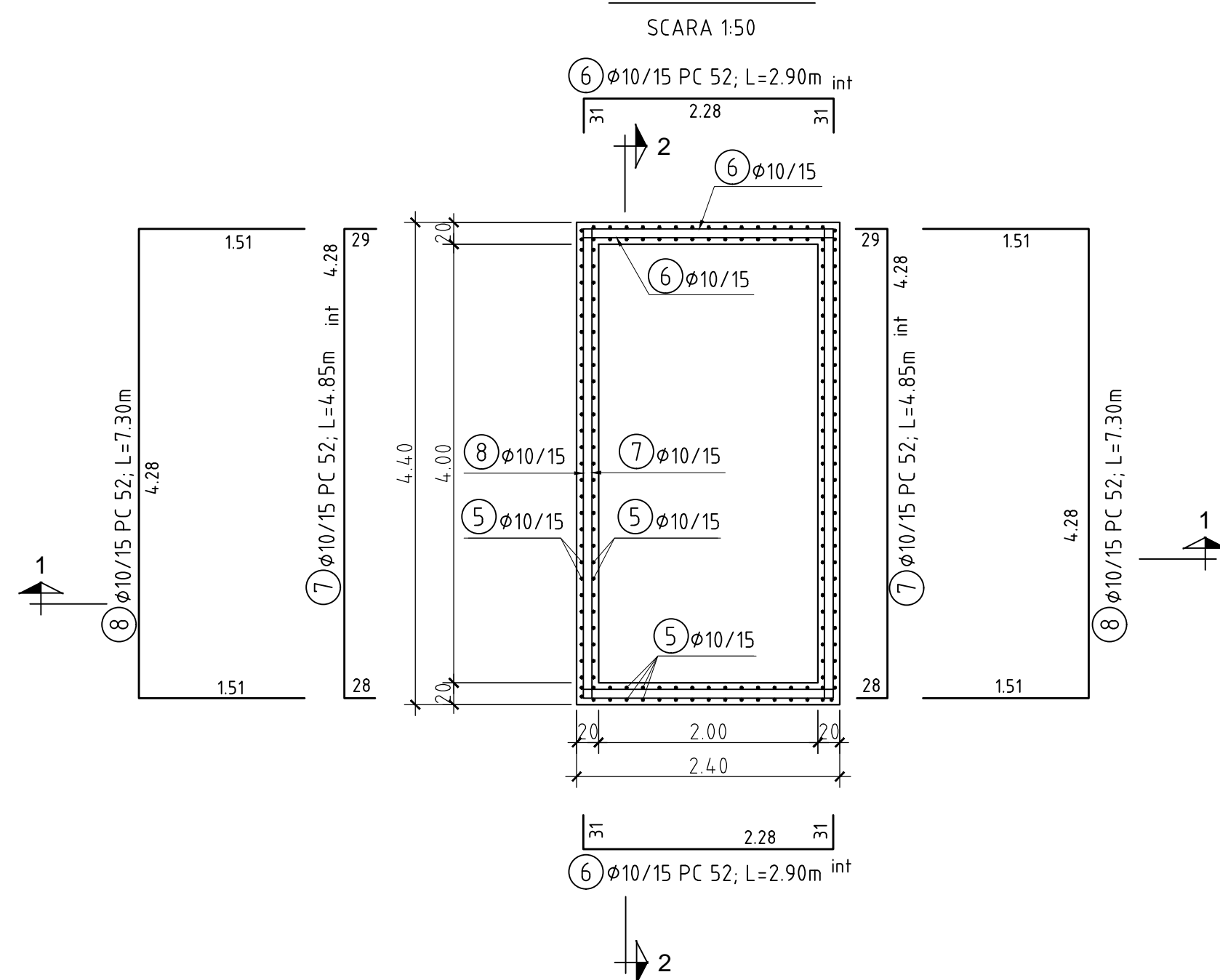
SECTIUNEA 2-2



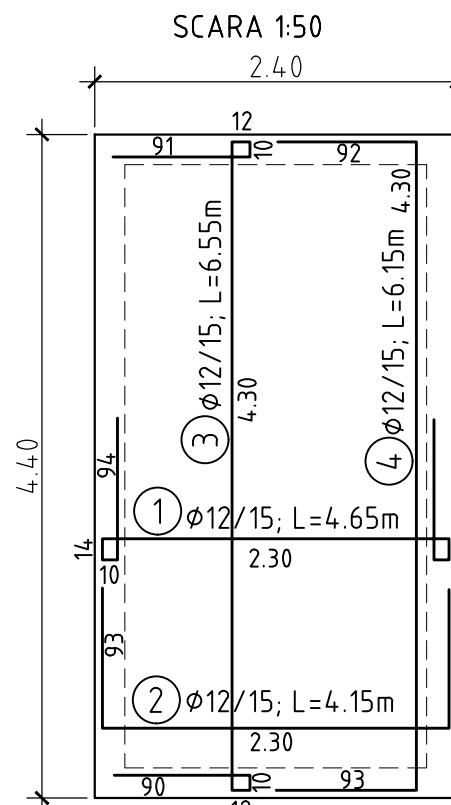
DETALIU A



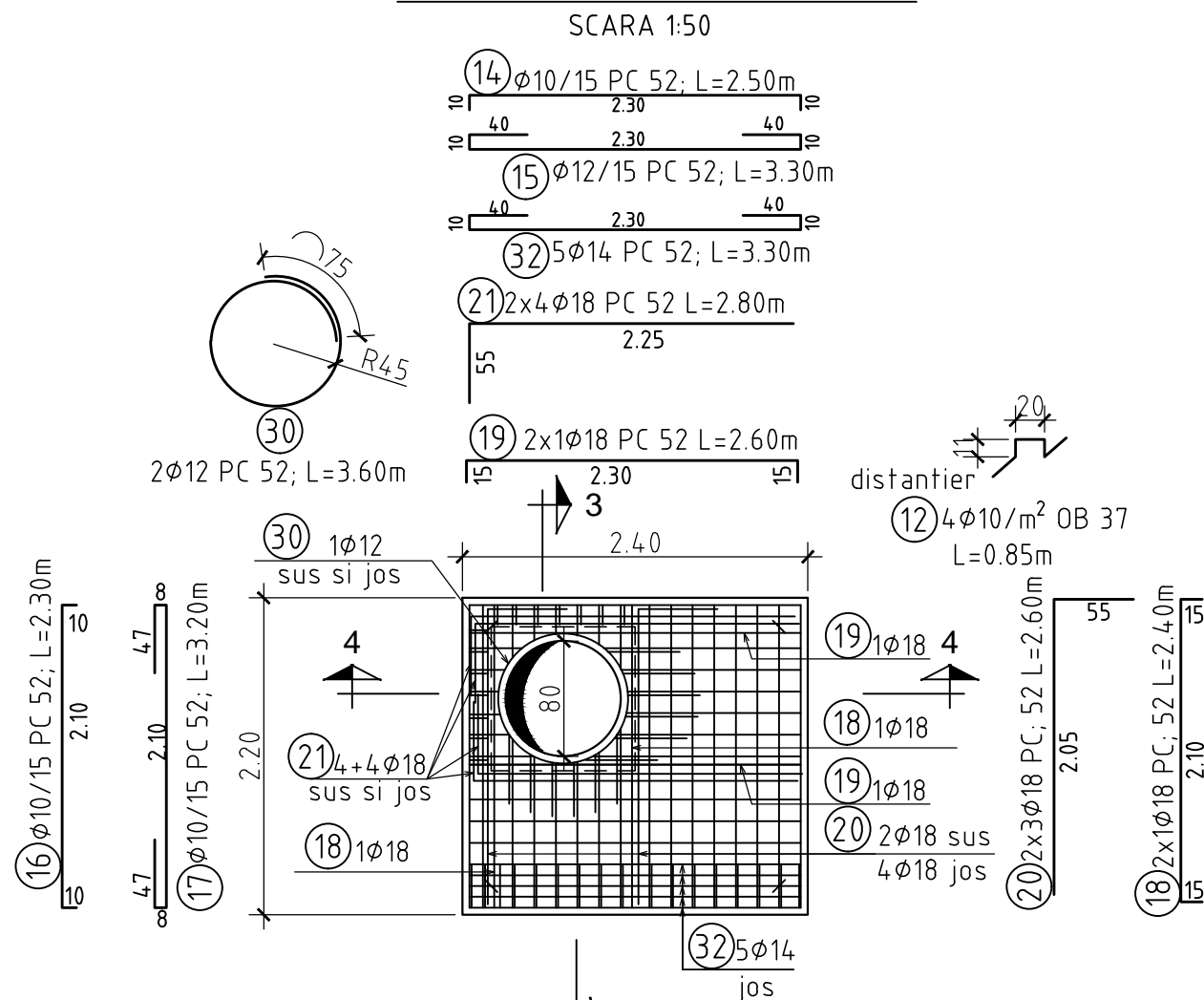
SECTIUNEA A-A



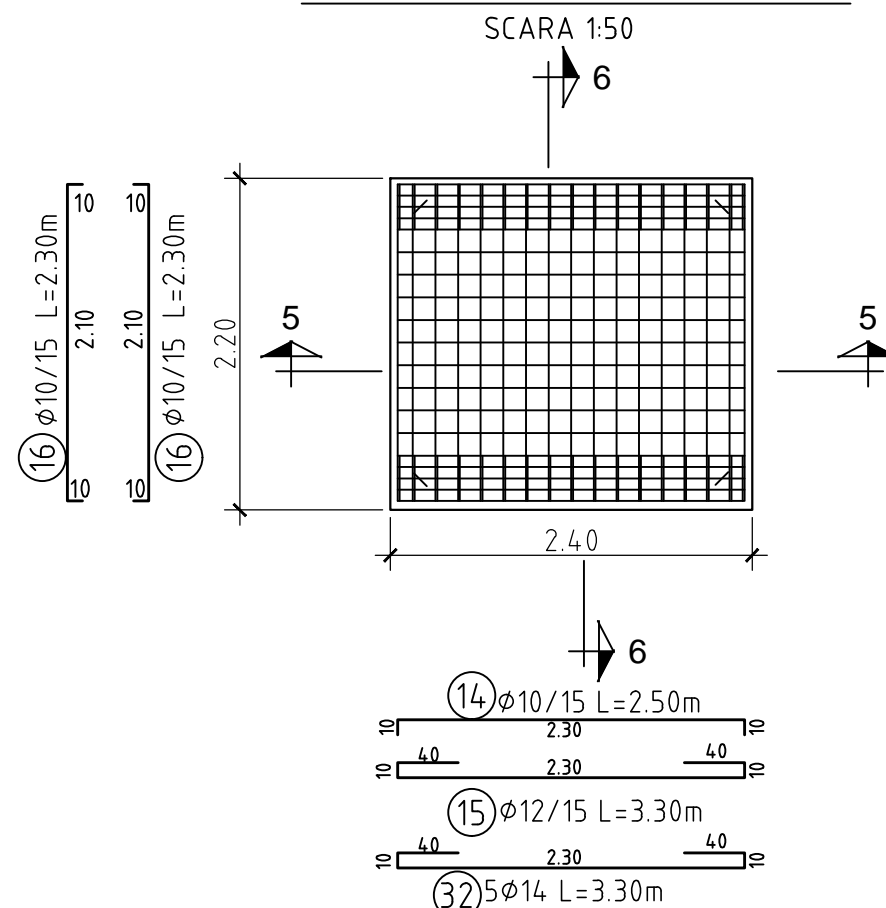
ARMARE RADIER



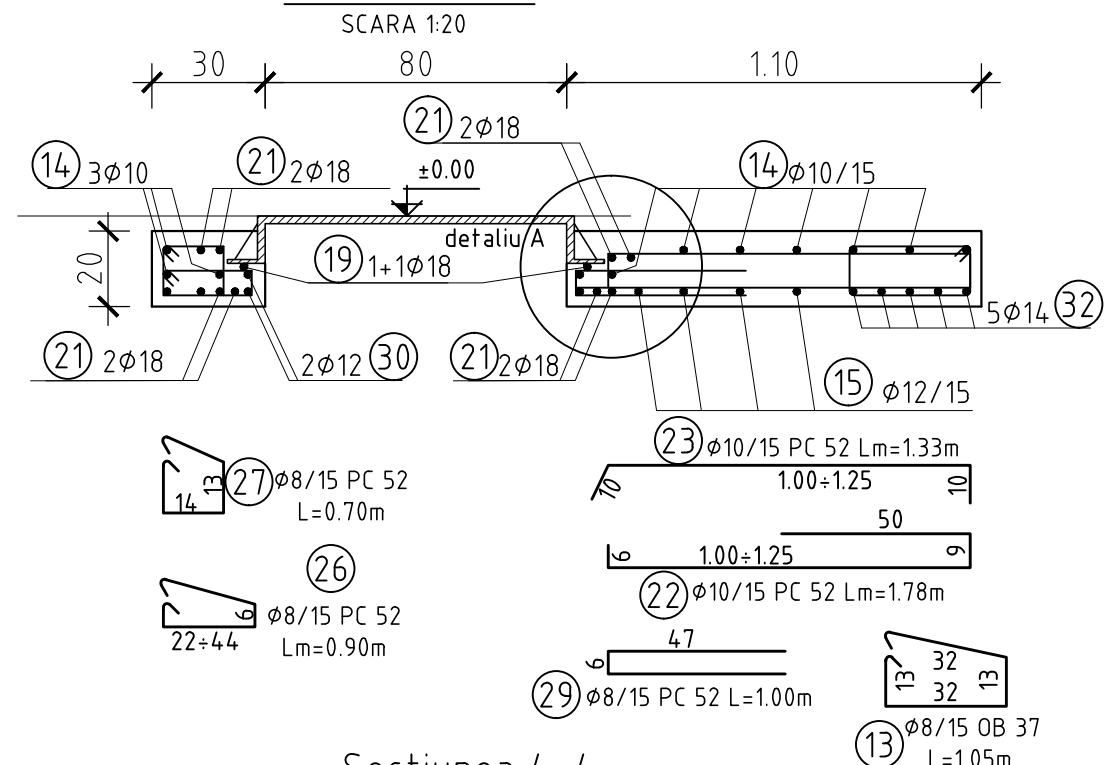
ARMARE PLACA PREFABRICATA P1



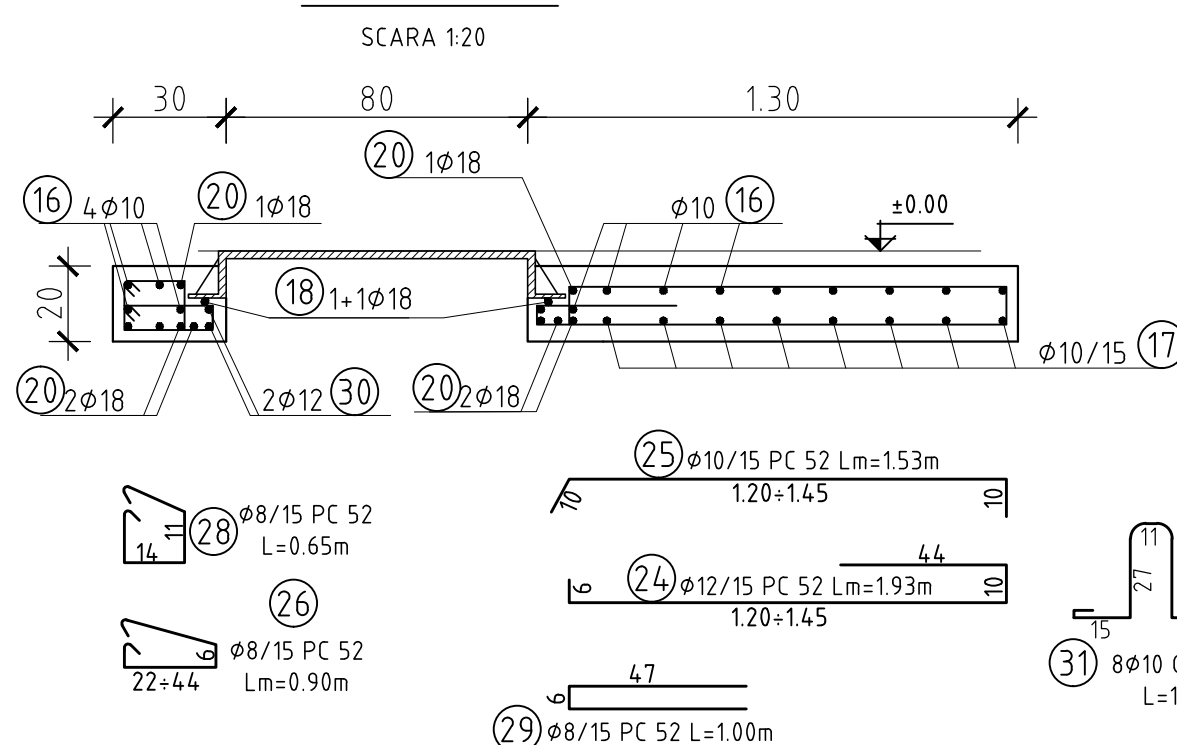
ARMARE PLACA PREFABRICATA P2



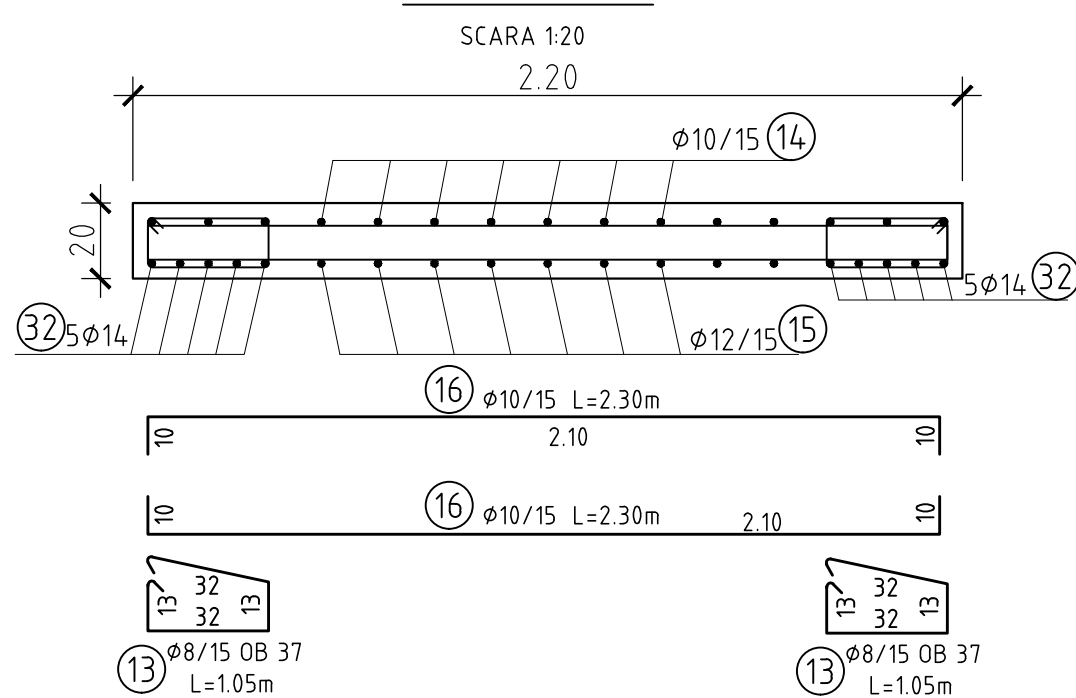
Sectiunea 3-3



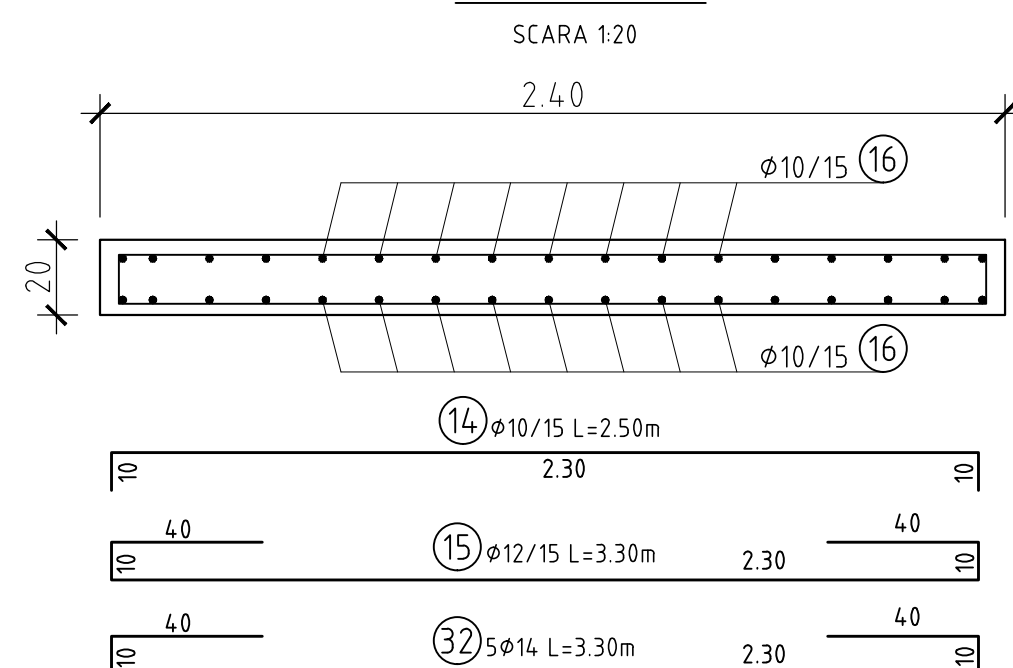
Sectiunea 4-4



Sectiunea 6-6



Sectiunea 5-5



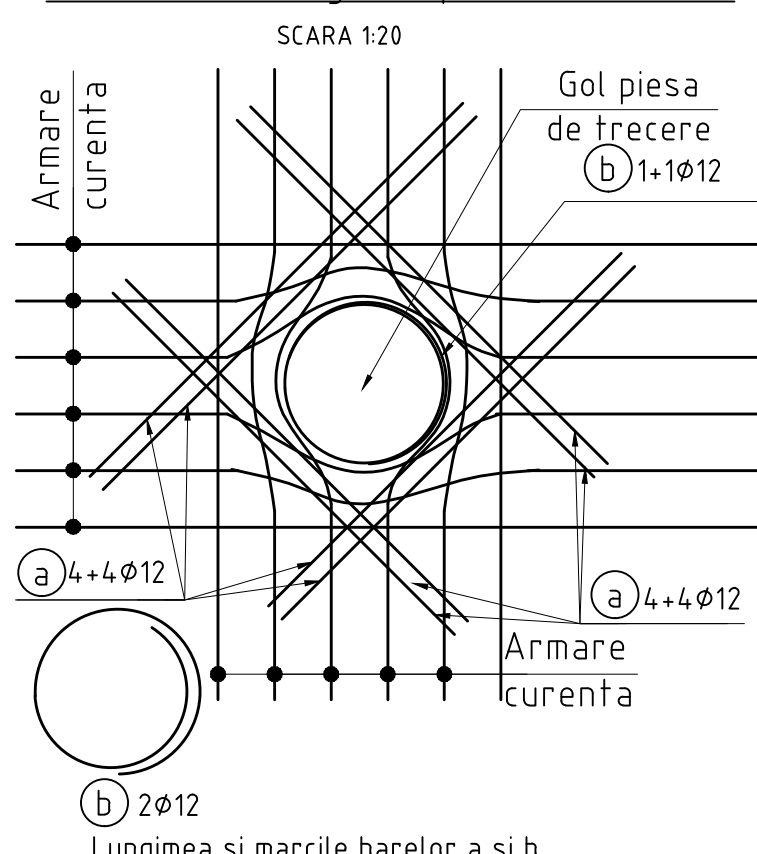
Extras de armatura

Marca	ø	Buc	Lungime	OB 37		PC52							
				ø 6	ø 10	ø 8	ø 10	ø 12	ø 16	ø 18	ø 20		
1	12	31	4.65					144.15					
2	12	31	4.15					128.65					
3	12	18	6.55					117.90					
4	12	18	6.15					110.70					
5	10	178	1.85				329.30						
6	10	24	2.90				69.60						
7	10	24	4.85				116.40						
8	10	24	7.30				175.20						
9	6	98	0.30	29.40									
10	6	91	0.60	54.60									
11	10	54	0.85				45.90						
12	20	6	2.00								12.00		
13	8	51	1.05			53.55							
14	10	19	2.50				47.50						
15	12	15	3.30					49.50					
16	10	44	2.30				101.20						
17	10	10	3.20				32.00						
18	18	2	2.40							4.80			
19	18	2	2.60							5.20			
20	18	6	2.60							15.60			
21	18	8	2.80							22.40			
22	10	6	1.78				10.68						
23	10	6	1.33				7.98						
24	12	6	1.93					11.58					
25	10	6	1.53				9.18						
26	8	14	0.90			12.60							
27	8	8	0.70			5.60							
28	8	8	0.65			5.20							
29	8	14	1.00			14.00							
30	12	2	3.60					7.20					
31	10	8	1.05	8.40			8.40						
32	14	15	3.30						49.50				
33	12	8	1.60					12.80					
34	12	2	1.10					2.20					
35	12	8	1.65					13.20					
36	12	2	1.25					2.50					
ml/a				84.00	8.40	90.95	953.34	600.38	49.50	48.00	12.00		
kg/ml				0.222	0.617	0.395	0.617	0.89	1.208	1.998	2.466		
kg/a				18.648	5.1828	35.9253	588.21	533.14	59.80	95.90	29.59		
TOTAL				kg/buc		24		1343					

NOTA:

- Acoperirea nominala cu beton a armaturilor este:
 - radier 45mm
 - pereti 40mm
 - placa interior 20mm
 - exterior 30mm
- Zona superioara a caminului se va betona pana la cota 0.00(cota finita drum), daca partea carosabila nu este din asfalt.
- Prezenta plansa se va citi impreuna cu plansele de instalatii hidraulice.
- Capacul va fi carosabil cu rama patrata, clasa D 400.
- Dimensiunile partiale ale armaturilor sunt cotate la interior.

Detaliu armare goluri piese de trecere



Lungimea si marile barelor a si b

DN mm	Bara marca a	Bara marca b		
110	33	1.60	34	1.10
150	35	1.65	36	1.25

BETON DE EGALIZARE
BETON ARMAT
OTEL BETON

C8/10,X0,Dmax 32,S3,CEM II B-M (S-LL) 32.5 R
C 25/30, XC4, XF3,C10.2,Dmax 22,S3,P4,CEM II/A-S 32.5R
OB 37, PC 52

Retele apa
Camin tip 27-Plan Armare

Desenat: Ing. B. Paraschiv Data: Aprilie 2013

Verificat: Ing. M. Serbanoiu Data: Aprilie 2013

Aprobat: Ing. D. Spiridon Data: Aprilie 2013

Planşa nr. CS-RE-PT/DA-A-R-27.2

Revizia 0